

RESEARCH INSTITUTE  
NATURE AND FOREST



Flanders  
State of  
the Art

# effectclass

an R package to interpret  
effects and visualise  
uncertainty

eRum 2020, Milan, Italy

e-Rum 2020, in the cloud

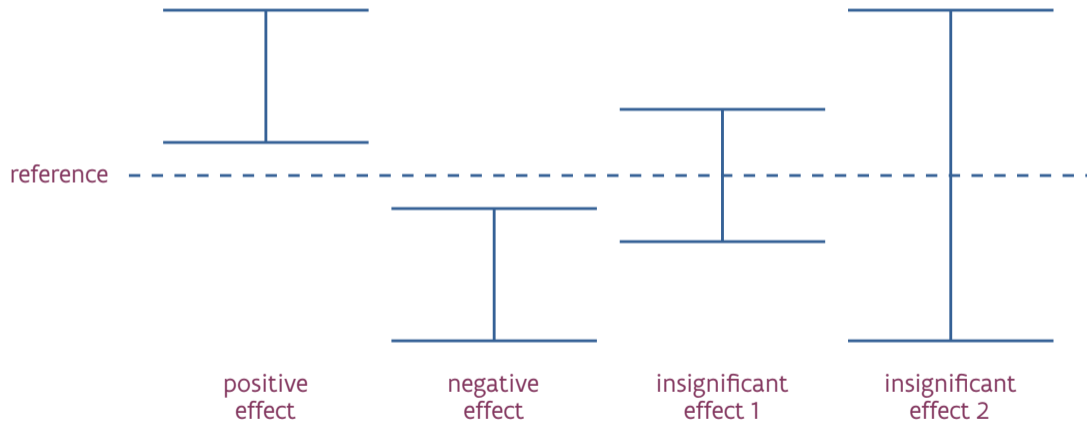
ir. Thierry Onkelinx

Research Institute for Nature and Forest (INBO), Brussels, Belgium

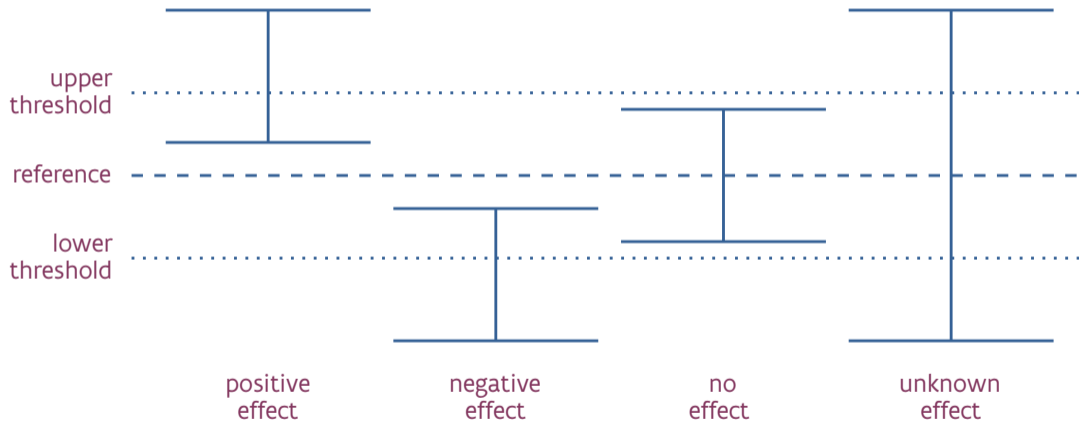


**e-Rum2020**  
VIRTUAL CONFERENCE  
17/20 JUNE  
MILANO

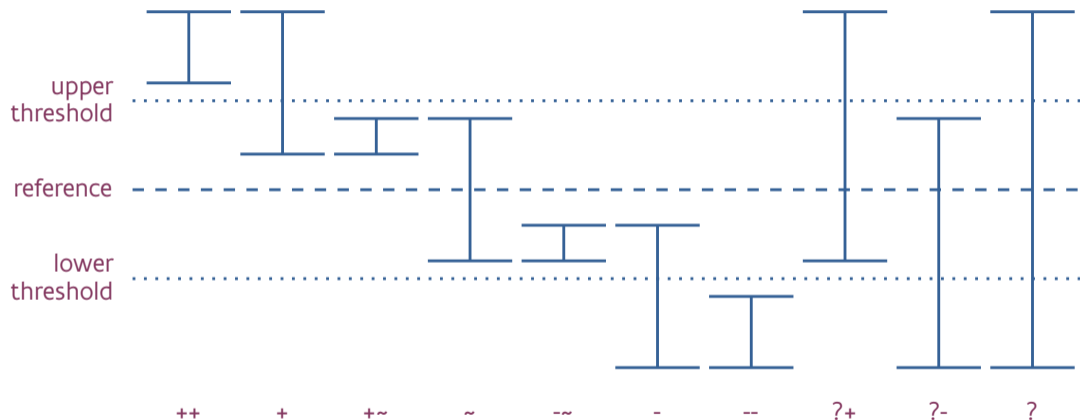
# Significant effect = reference is outside confidence interval



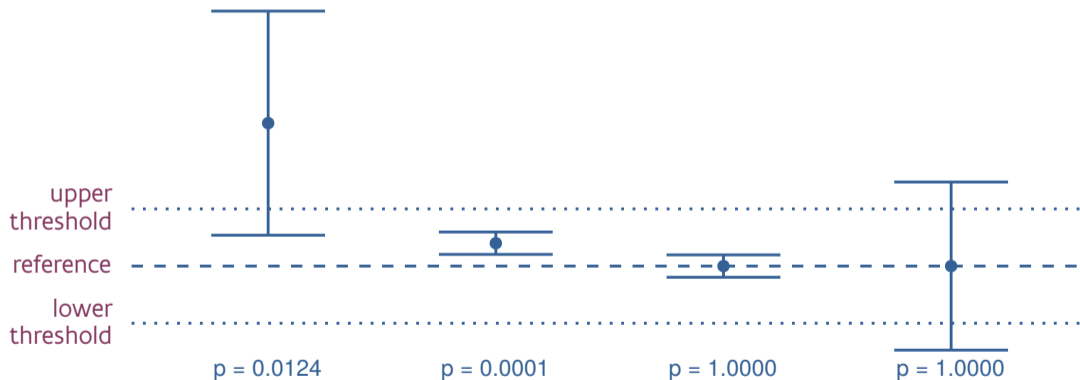
# Use extra thresholds to interpret confidence intervals



# Reference and thresholds define 10 classes



# Confidence intervals are more informative than point estimates and p-values



$p = 0.0124$

$p = 0.0001$

$p = 1.0000$

$p = 1.0000$

+

+~

~

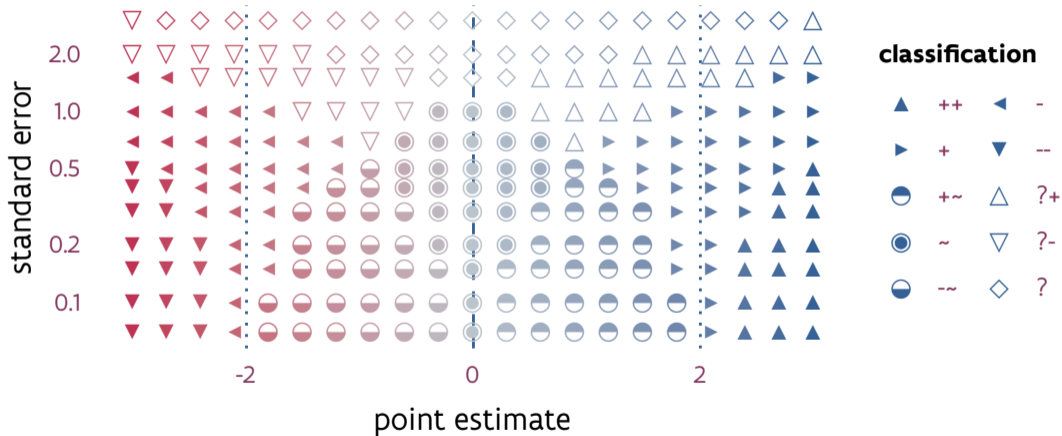
?

# Code example

```
ds <- data.frame(  
  lcl = c(-5, -5, -5, -5, -2, -2, -2, 1, 1, 4),  
  ucl = c( 5,  2, -1, -4,  5,  2, -1, 5, 2, 5)  
)  
library(effectclass)  
ds$effect <- classification(lcl = ds$lcl, ucl = ds$ucl, threshold = 3)  
ds$coarse <- coarse_classification(ds$effect)  
ds$unsigned <- remove_sign(ds$effect)
```

```
## Rows: 10  
## Columns: 5  
## $ lcl      <dbl> 4, 1, 1, -2, -2, -5, -5, -2, -5, -5  
## $ ucl      <dbl> 5, 5, 2, 2, -1, -1, -4, 5, 2, 5  
## $ effect   <fct> ++, +, +~, ~, -~, -, --, ?+, ?-, ?  
## $ coarse   <fct> +, +, +, ~, -, -, -, ?, ?, ?  
## $ unsigned <fct> **, *, *~, ~, *~, *, **, ?*, ?*, ?
```

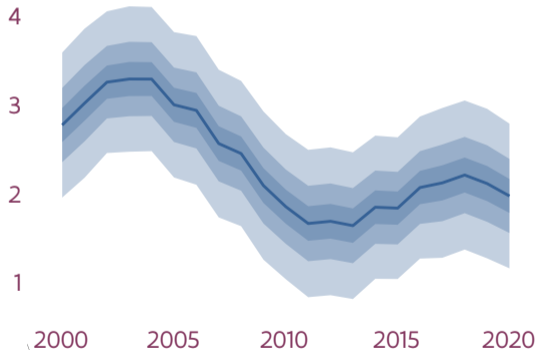
# ggplot2 add-ons: stat\_effect() + scale\_effect()



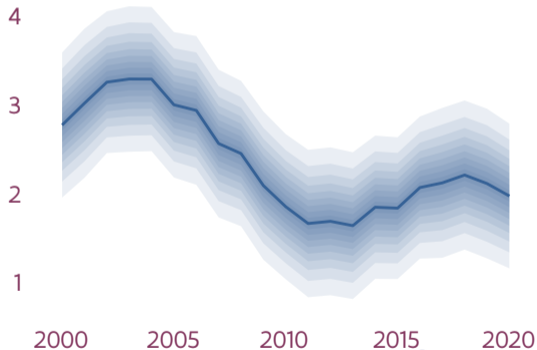
stat\_fan() + geom\_line()

Britton et al. (1998)

fine = FALSE (default)



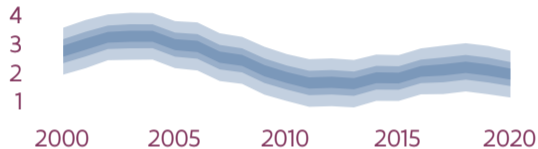
fine = TRUE



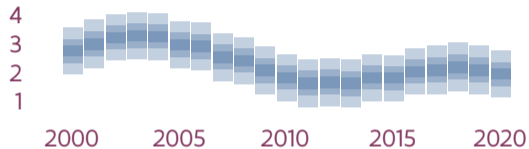


# stat\_fan() supports different geoms

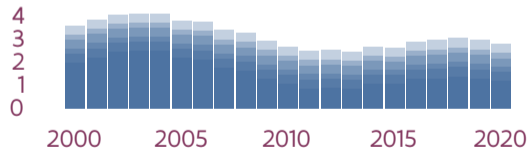
## ribbon (default)



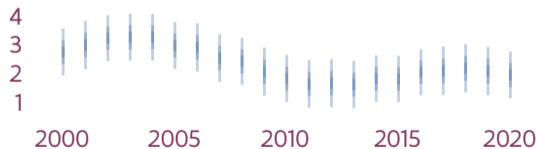
## rect



## bar



## linerrange



# Where to find effectclass

Links are available in the abstract at <https://2020.erum.io/>

## Vignettes and documentation

<https://effectclass.netlify.app>

## Source code

<https://github.com/inbo/effectclass>

```
remotes::install_github("inbo/effectclass")
```

# Referenties I

Britton, E., Fisher, P. & Whitley, J. (1998). The inflation report projections: understanding the fan chart. Bank of England Quarterly Bulletin (2): 30–37. <https://www.bankofengland.co.uk/-/media/boe/files/quarterly-bulletin/1998/the-inflation-report-projections-understanding-the-fan-chart>